

modern family

PHOTOGRAPHY BY RON ROSENZWEIG

Danmark Development turns a traditional Mediterranean home in Palm Beach Gardens into a light-filled, modern marvel with room to grow.

BY LINDSAY LAMBERT DAY

In the world of real estate, location almost always wins—even when it means signing up for an extensive renovation to score the home of your dreams.

Such was the case for one South Florida couple who were in search of a home both private and safe enough for their three young children to play nearby and large enough to accommodate the family and their live-in help. They found most of what they were looking for in the Palm Beach Gardens golf course community of Mirasol, a sprawling, single-story five-bedroom home situated on a quiet cul-de-sac with a private preserve out back. But for all of the property's wins, the Mediterranean-style home's traditional interiors weren't in line with the couple's bright and modern taste, and they still needed a bit more living space. So they enlisted Dan Morrow and Mark Samra of Danmark Development to turn their discovery into their dream house.

One of the first challenges the team met was figuring out how to add more living space to the



NEARLY EVERY ROOM IN THIS FIVE-BEDROOM MEDITERRANEAN-STYLE HOME WAS RENOVATED TO CREATE A MORE MODERN LOOK.

coquina

MODERN FLORIDA LIVING



Modern
Mediterranean
RETHINKING TRADITIONAL
SOUTH FLORIDA STYLE

+ DESIGN SHOWCASE
Expert tips, inspiration, and fabulous finds

modern family



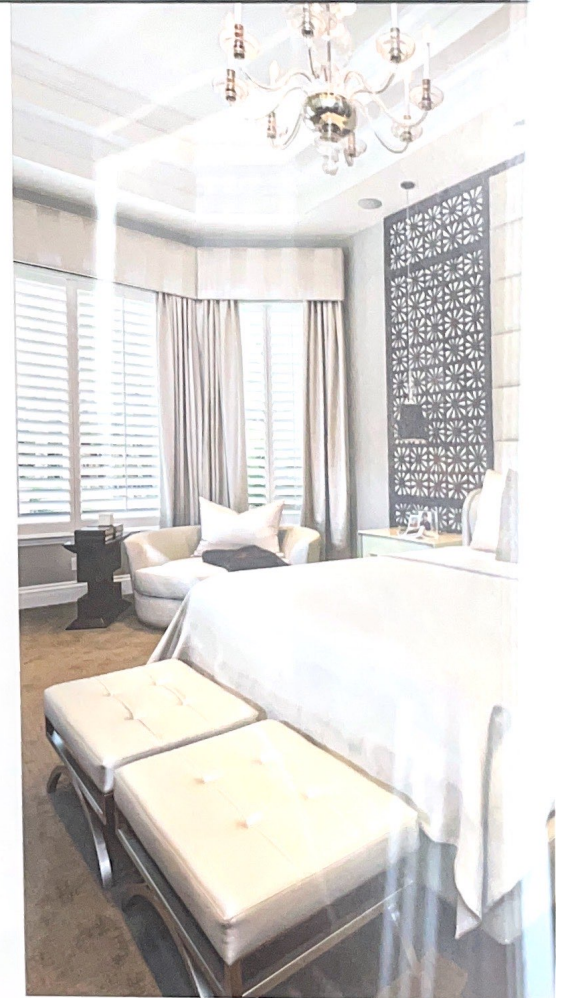
THE DINING ROOM'S BARREL CEILING WAS PAINTED WHITE TO LIGHTEN UP THE ROOM; UNIQUE LIGHT FIXTURES ADD CONTEMPORARY FLAIR; VENETIAN PLASTER REPLACED MIRRORS AND PANELS ON THE WALLS.



home file

Builders: Dan Morrow and Mark Samra, Danmark Development LLC, Palm Beach Gardens (danmarkdevelopment.com/) **Architect:** Cory S. Cross, North Palm Beach (coryscross.com/) **Designer:** Lesty Maxwell, Lesty Maxwell Interiors, Jupiter (lestymaxwellinteriors.com/) **Built-ins and Bar:** Artistry Woodcraft, Riviera Beach **Kitchen:** Wood U Envision, West Palm Beach **Marble Tile and Countertops:** Accurate Tile & Marble, Jupiter **Wood Flooring:** ASD Surfaces, North Palm Beach (asdsurfaces.com/) **Appliances and Plumbing:** Ferguson, West Palm Beach (ferguson.com/) **Emtek Door Hardware:** Palm Beach Classic Hardware, West Palm Beach (palmbeachclassichardware.com/)

The same treatment was applied to the ceiling beams in the open-plan kitchen and family room, a space Morrow says is the best example in the house of all the different materials used in its refurbishment. The modernization is apparent in details like high-gloss laminate cabinet doors, glass in both the backsplash and the cabinet doors; stainless steel hoods, and a custom built-in designed by Artistry Woodcraft comprising a number of staggered cubes and stone veneers. Wide tiger-wood panels by Tom Fasig of Wood U Envision camouflage the refrigerator. Ultimately, says Morrow, nearly every room in the home was worked on, with more renovations planned. ♦



modern family



the living room. "The bar is the first thing you see when you step into the home," explains Morrow. Its curved shape and sunken floor, however, weren't in line with the couple's taste. So the Danmark team filled in the step-down and replaced the bar with a sleek, carved, espresso-stained maple design by Artistry Woodcraft. "We did a specialized cut-out design with our CNC machine, which is used for intricate carvings," says Artistry Woodcraft's Christine Tedesco. "It is definitely interior design eye candy—the intricacy sets that bar apart." Adjacent to the bar, and also in need of a refresh, was a tall, heavy, and ornate fireplace. "We removed some cast-stone details and simplified the mantel," says Morrow. After a few more spot-fixes that included shrinking down and backlighting a few too-tall drywall display niches in the foyer and dining room, Danmark moved on to the dining room ceiling. The room's barrel ceiling and "very heavy" beams didn't exactly play into the couple's modern aesthetic, but instead of removing the beams and possibly creating collateral damage, the team used paint to lighten them up. The white de-emphasizes the impact of looking up into the ceiling spaces, so it becomes



STAINLESS STEEL DETAILS AND APPLIANCES MIXED WITH NATURAL TONES